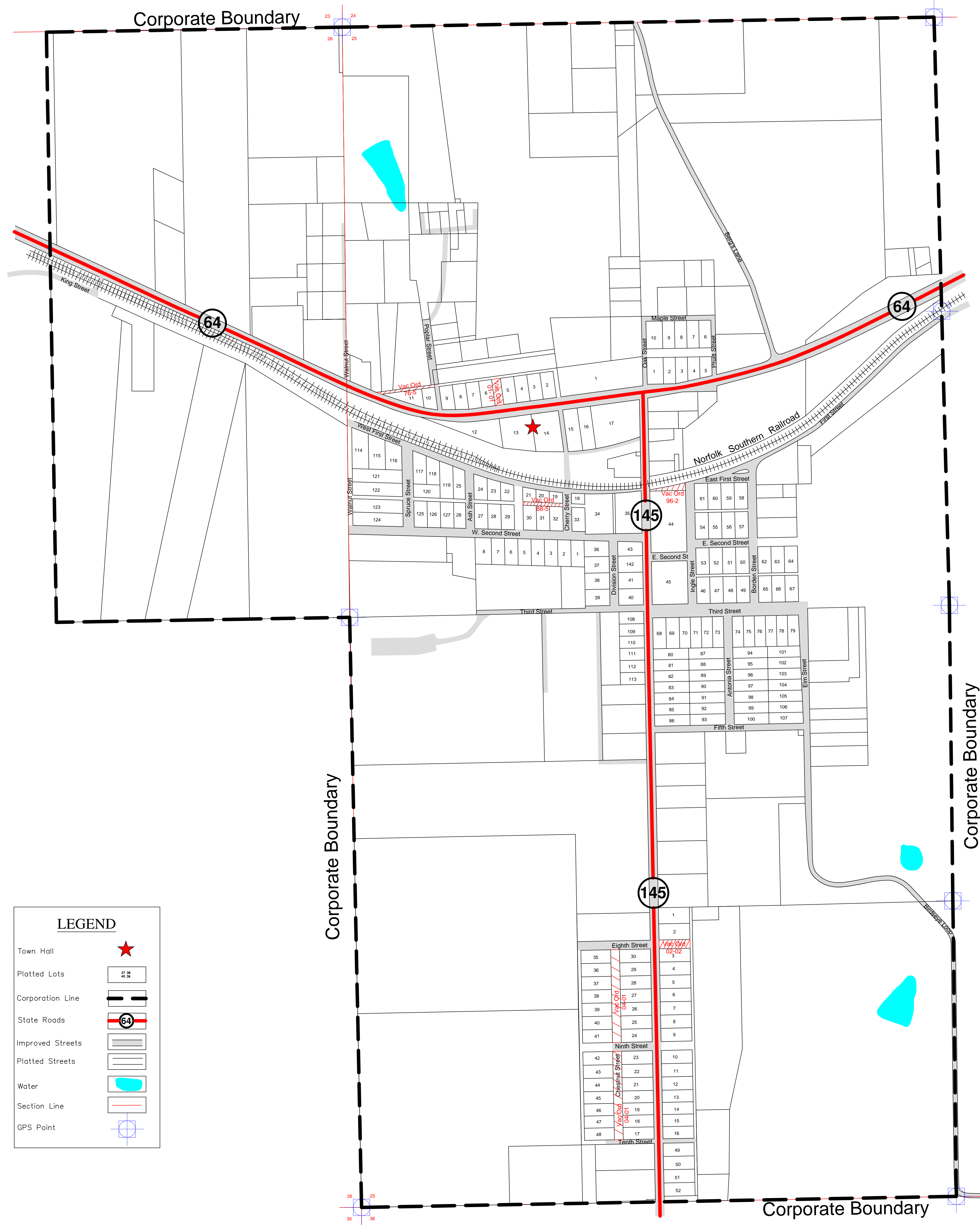


# Town of Birdseye, Indiana Base Map

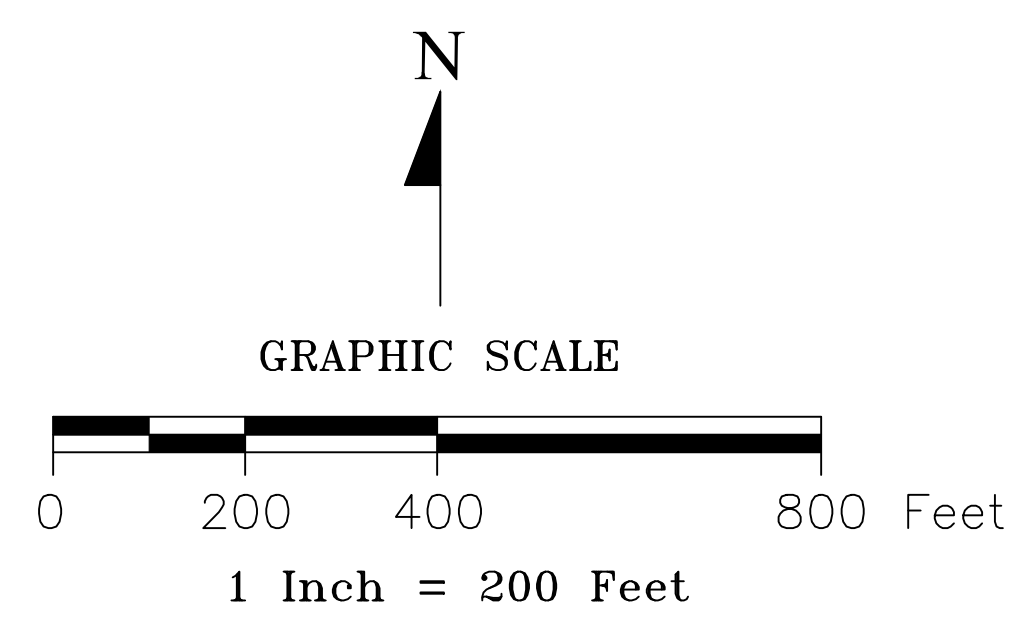


LEGEND	
Town Hall	★
Platted Lots	▭
Corporation Line	— — — —
State Roads	64
Improved Streets	▬▬▬▬
Platted Streets	▬▬▬▬
Water	■
Section Line	— — — —
GPS Point	⊕

The information located upon the Birdseye, Indiana Base Map is provided by Indiana 15 Regional Planning Commission. The data provided herein was compiled using various sources. The sources include:

- Birdseye Plat Maps from the Dubois County Auditor's Office;
- Miscellaneous surveys and deeds recorded in the Dubois County Recorder's office;
- Birdseye Town Ordinances that annex territory and vacate streets up to and including 2008-02;

Some of these sources had conflicting boundary descriptions and lots that did not fully close. Any person who relies on said information does so solely at their own risk. While the Indiana 15 Regional Planning Commission worked diligently to piece the legal documents, this data is provided as is without warranty.



INDIANA 15 REGIONAL PLANNING COMMISSION		
221 East First Street Ferdinand, IN 47532	PHONE: (812) 367-8455 FAX: (812) 367-8171 Website: www.ind15rpc.org	
Title: TOWN OF BIRDSEYE, INDIANA -BASE		
Prepared by: T.E.M. & E.E.	Reviewed by: L. G.	Orig: June 15, 2010
Revisions:		
N:\Counties\Dubois\Maps\Base Maps\Comm\Birdseye		
© Copyright 2010 Indiana 15 Regional Planning Commission		