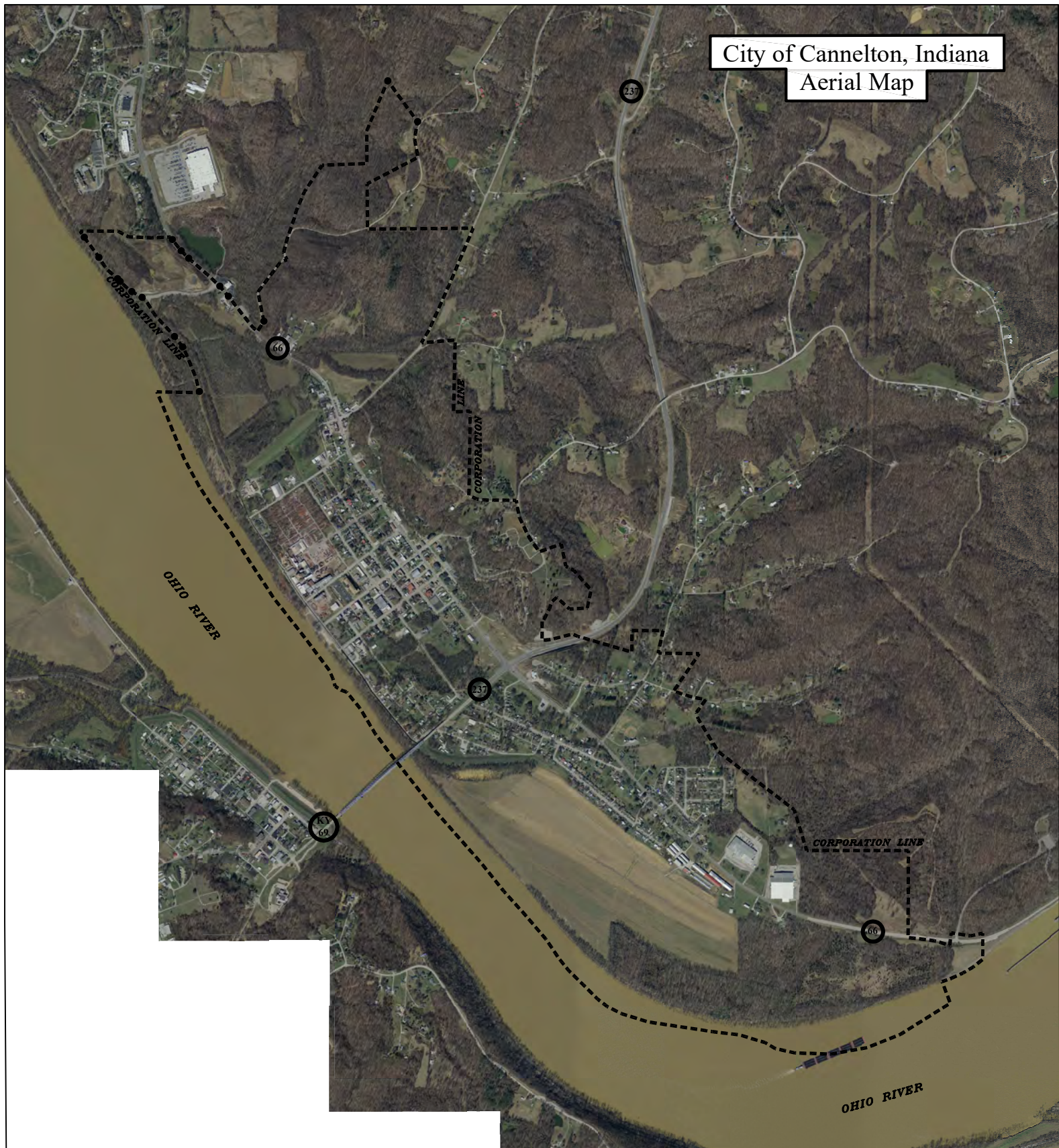


# City of Cannelton, Indiana Aerial Map



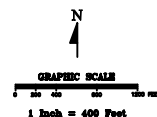
The information located upon this Cannelton, Indiana Base Map is provided by Indiana 15 Regional Planning Commission. The data provided herein was compiled using various sources. The sources include:

- City of Cannelton Map, May 28, 1962 by S. W. Stockrahm;
- Map of Cannelton, IND and Vicinity, WHB 1965;
- Cannelton Plat Maps from the Perry County Auditor's Office, John Kistler & Assoc., Inc. Grand Haven Michigan;
- Numerous platted subdivisions as recorded in the Perry County Recorder's Office;
- Book of American Cannel Coal Outlets located in the Perry County Recorder's Office;
- Miscellaneous surveys and deeds recorded in the Perry County Recorder's Office;
- SR 237 Realignment from the Indiana Department of Transportation;
- Cannelton City Ordinances that amend territory and vacate streets up to and including Ordinance 2015-7.

The angles described in the legal documents were rotated by Indiana 15 Regional Planning Commission to align with the as built roadways as shown upon the USGS digital orthophoto aerial imagery.

Some of these sources had conflicting boundary descriptions and lots that did not fully close. Any person who relies on said information does so solely at their own risk. While the Indiana 15 Regional Planning Commission worked diligently to piece the legal documents, this data is provided as is without warranty.

Aerial Photo Taken Spring 2020



<b>INDIANA 15 REGIONAL PLANNING COMMISSION</b> 200 West Perry Street Cannelton, IN 47731 Phone: 317.834.4477 Fax: 317.834.4477 Website: www.in15.org	
Title: <b>Cannelton, INDIANA - Aerial</b> Prepared By: <b>E.E.</b> Reviewed By: <b>L.G.</b> Date: <b>Jan. 10, 2023</b>	
Revision: Aug. 7, 2006	
Revision: June 24, 2016	
© Copyright 2016 Indiana 15 Regional Planning Commission	