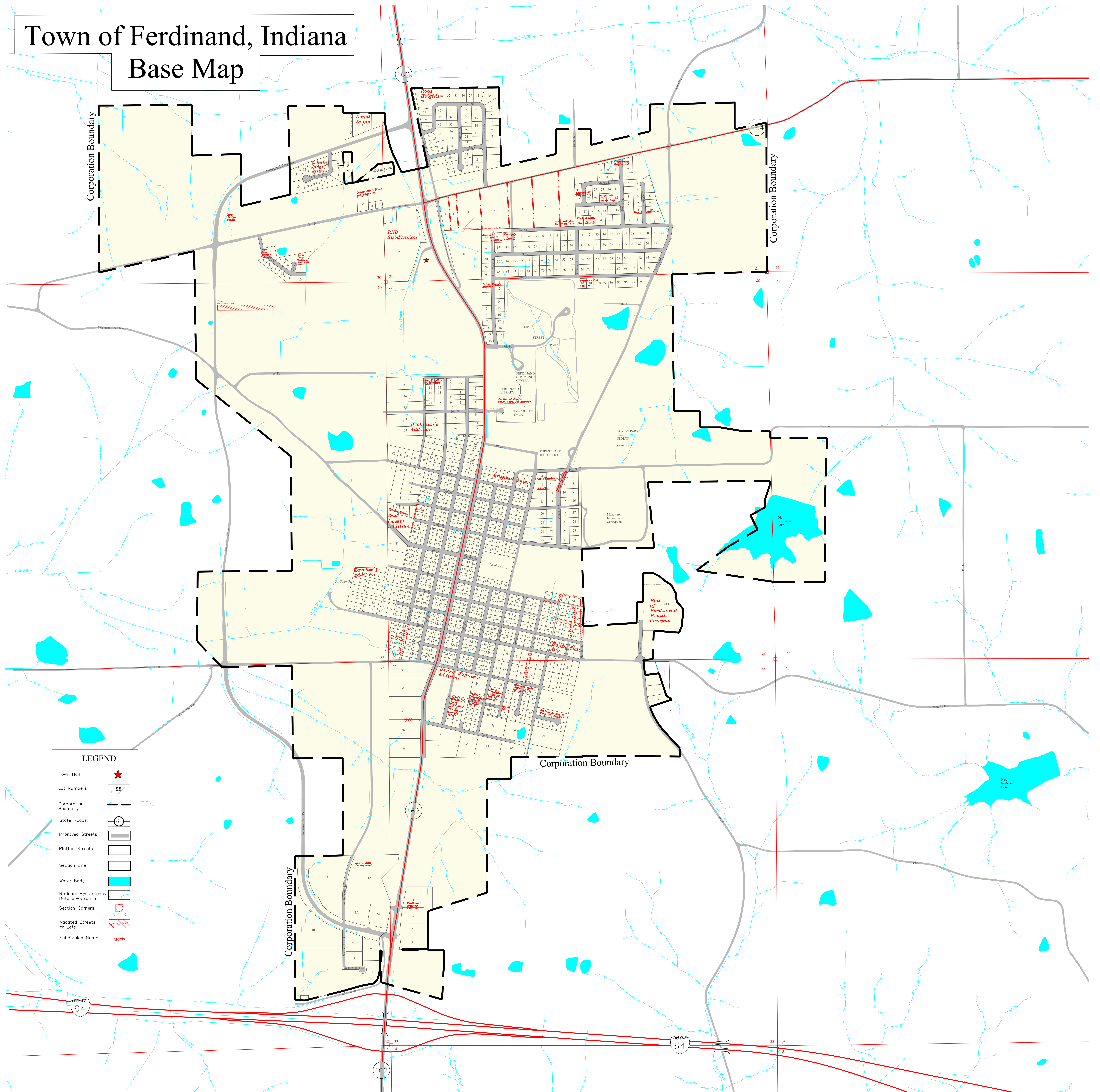


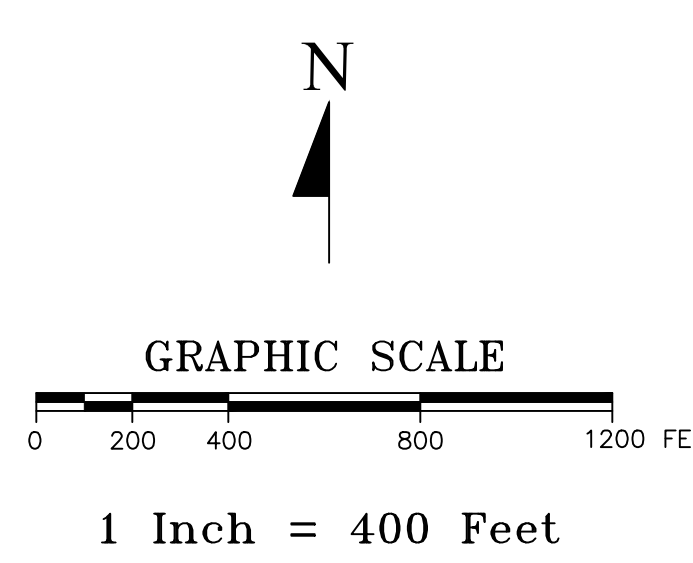
Town of Ferdinand, Indiana Base Map



The information located upon the Ferdinand, Indiana Base Map is provided by Indiana 15 Regional Planning Commission. The data provided herein was compiled using various sources. The sources include:

- Ferdinand Plat Maps from the Dubois County Auditor's Office;
- Miscellaneous surveys and deeds recorded in the Dubois County Recorder's office;
- Ferdinand Ordinances that annex territory and vacate streets up to and including 2022-02.

Some of these sources had conflicting boundary descriptions and lots that did not fully close. Any person who relies on said information does so solely at their own risk. While the Indiana 15 Regional Planning Commission worked diligently to piece the legal documents, this data is provided as is without warranty.



INDIANA 15 REGIONAL PLANNING COMMISSION
 227 East First Street
 Ferdinand, IN 47532
 PHONE: 812/267-5433
 FAX: 812/267-5431
 Website: www.ind15rpc.org

Title: Ferdinand, INDIANA - Base
 Prepared By: E.E., N.G., S.M. | Reviewed By: L.G. | Orig: June 15, 2015
 Revisions: Sept 12, 2017 | June 6, 2022

N:\Counties\Dubois\Map\Map\Comm\Ferdinand Base Map
 © Copyright 2022 Indiana 15 Regional Planning Commission