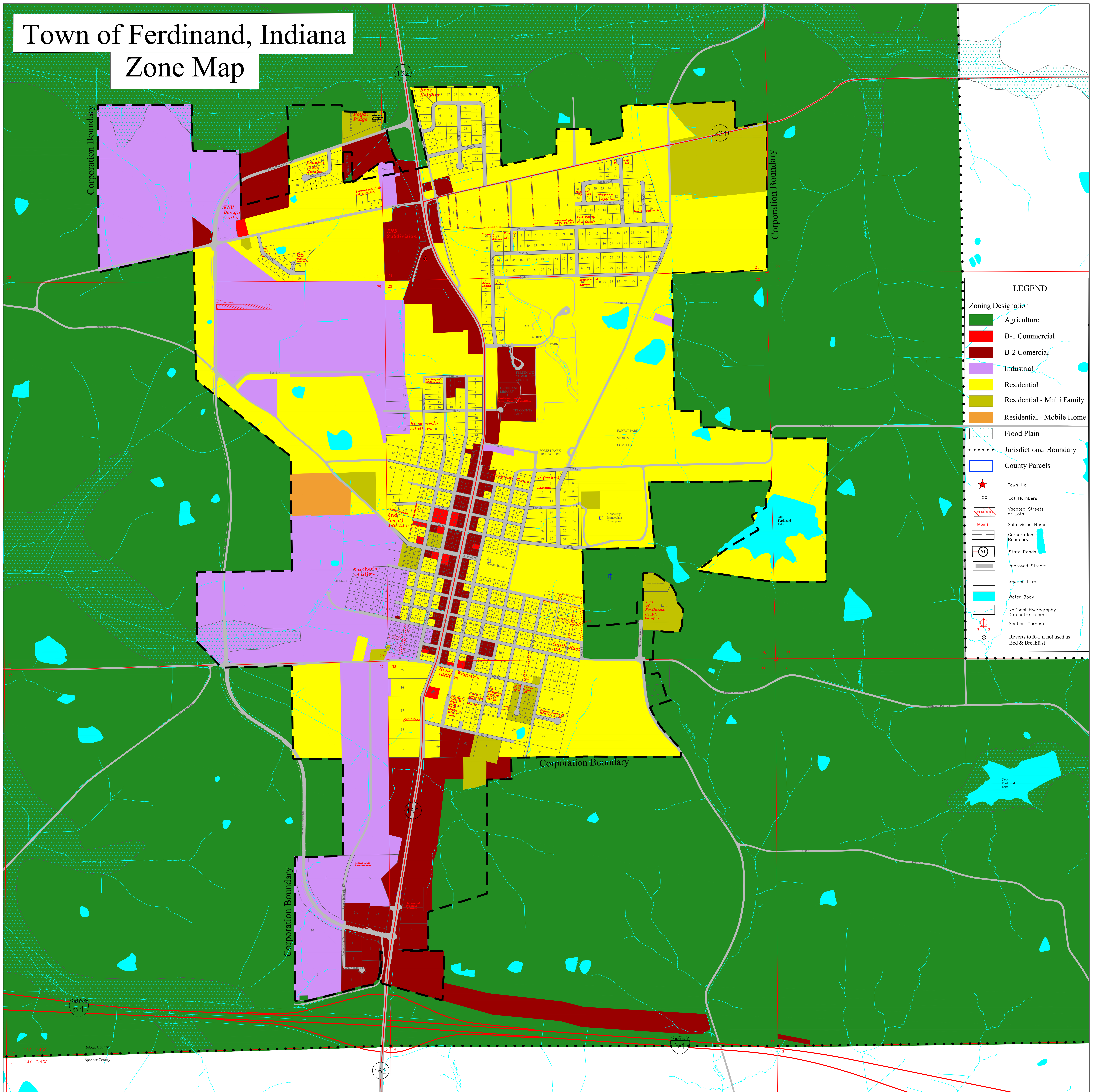


# Town of Ferdinand, Indiana Zone Map

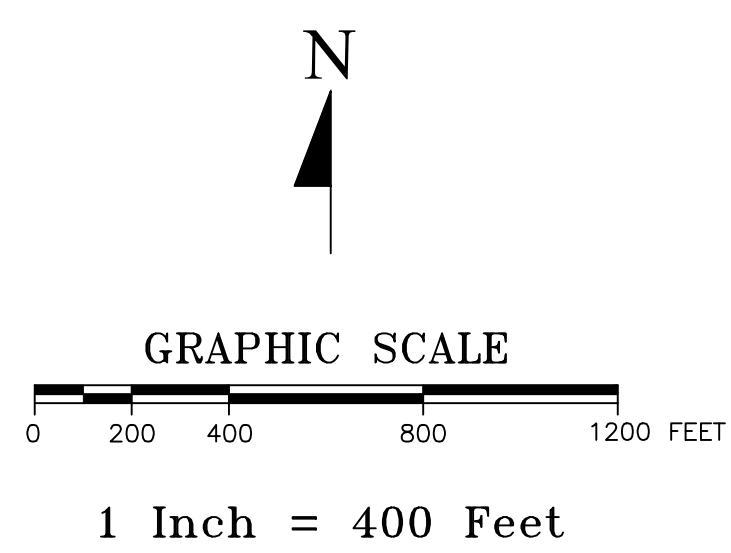


LEGEND	
<b>Zoning Designation</b>	
	Agriculture
	B-1 Commercial
	B-2 Commercial
	Industrial
	Residential
	Residential - Multi Family
	Residential - Mobile Home
	Flood Plain
	Jurisdictional Boundary
	County Parcels
	Town Hall
	Lot Numbers
	Vacated Streets or Lots
	Subdivision Name
	Corporation Boundary
	State Roads
	Improved Streets
	Section Line
	Water Body
	National Hydrography Dataset—streams
	Section Corners
	Reverts to R-1 if not used as Bed & Breakfast

The information located upon the Ferdinand, Indiana Base Map is provided by Indiana 15 Regional Planning Commission. The data provided herein was compiled using various sources. The sources include:

- Ferdinand Plat Maps from the Dubois County Auditor's Office;
- Miscellaneous surveys and deeds recorded in the Dubois County Recorder's office;
- Ferdinand Ordinances that annex territory and vacate streets up to and including 2022-02.

Some of these sources had conflicting boundary descriptions and lots that did not fully close. Any person who relies on said information does so solely at their own risk. While the Indiana 15 Regional Planning Commission worked diligently to piece the legal documents, this data is provided as is without warranty.



<b>INDIANA 15 REGIONAL PLANNING COMMISSION</b> 221 East First Street Ferdinand, IN 47532 PHONE: (812) 885-8431 FAX: (812) 885-8471 Website: www.i15rc.org	
Title: Ferdinand, INDIANA - Zone	
Prepared By: E.E., N.G., S.M.	Reviewed By: L.G.   Orig: June 15, 2015
Revisions: June 13, 2017; September 12, 2017; December 31, 2017	
Revisions: February 22, 2019; June 6, 2022	
N:\County\Dubois\Maps\Base Maps\Comm\Ferdinand Base Map	
© Copyright 2022 Indiana 15 Regional Planning Commission	