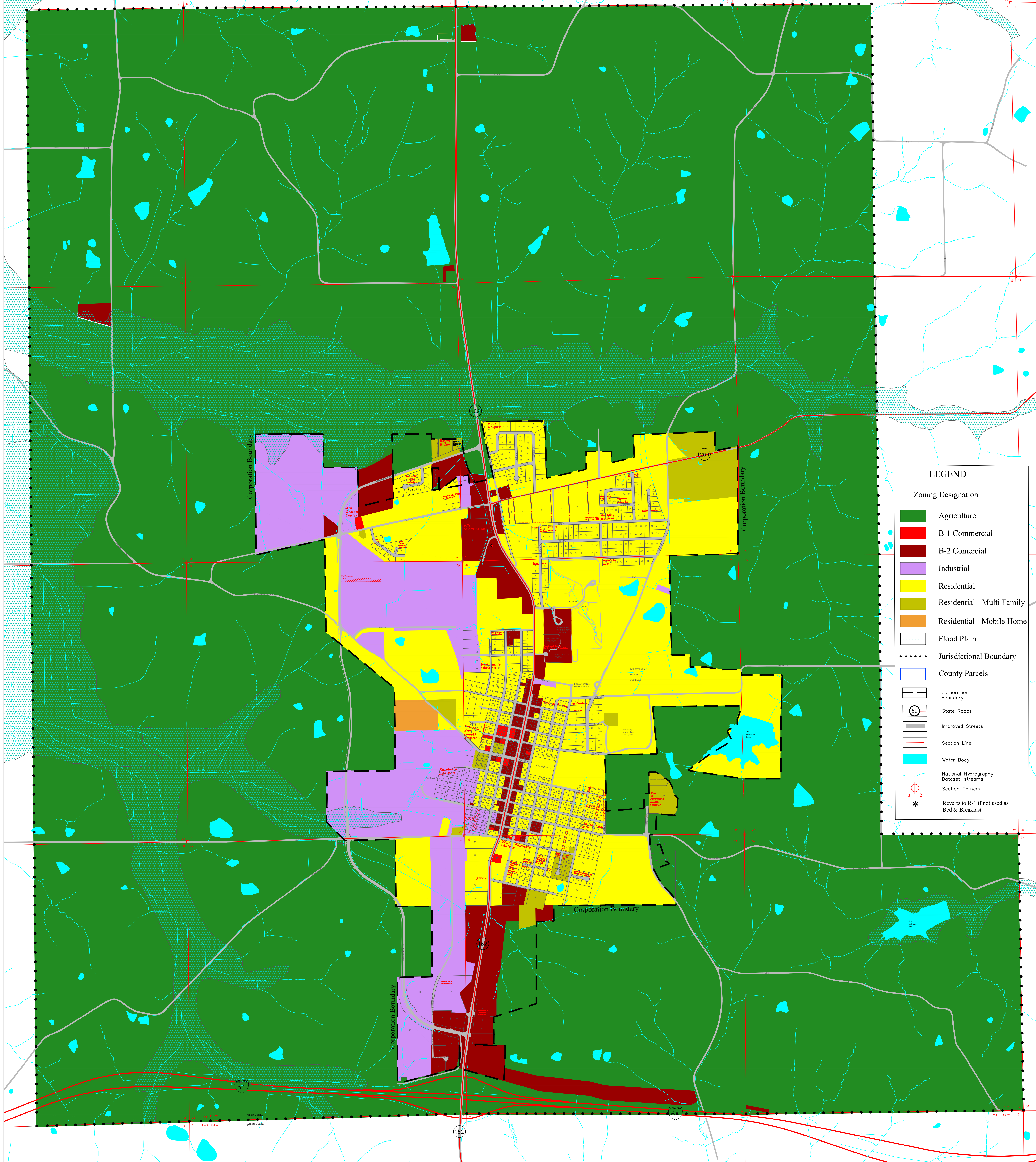


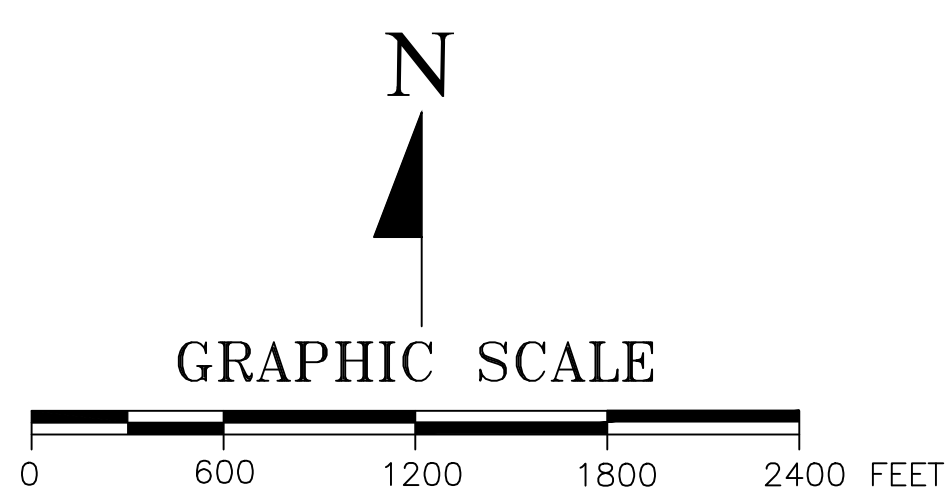
Town of Ferdinand, Indiana Zone Map- Jurisdictional Area



The information located upon the Ferdinand, Indiana Zoning Map is provided by Indiana 15 Regional Planning Commission. The data provided herein was compiled using various sources. The sources include:

- The June 15, 2015 Ferdinand Base Map Produced by Indiana 15 Regional Planning Commission
- Ferdinand Replacement Zoning Ordinance 97-3 and associated zoning map dated December 1997
- May 27, 2009 Zoning Designations Map Titled Town of Ferdinand, Indiana Planning and Zoning
- Ferdinand Ordinances from Ferdinand Code Book from 97-3 up to and including 2022-04 Rezoning and adopting amendments to the text of the Zoning Ordinance.

While the Indiana 15 Regional Planning Commission worked diligently to piece the legal documents together, this data is provided as is without warranty. Any person who relies on said information does so solely at their own risk.



1 Inch = 600 Feet

INDIANA 15 REGIONAL PLANNING COMMISSION
 221 East First Street
 Ferdinand, IN 47312
 PHONE: 812.265.4423
 FAX: 812.867.8171
 WWW: www.in15.org

Title: Ferdinand, INDIANA - Jurisdictional Area Zoning Map
 Prepared By: E.E. N.G., S.M. | Reviewed By: L.G. | Orig: April 12, 2016
 Revisions: June 13, 2017; September 12, 2017; December 31, 2017
 Revisions: February 22, 2019; June 6, 2022
 N:\County\District\Maps\Zone Maps\Ferdinand Zoning 2022
 © Copyright 2022 Indiana 15 Regional Planning Commission