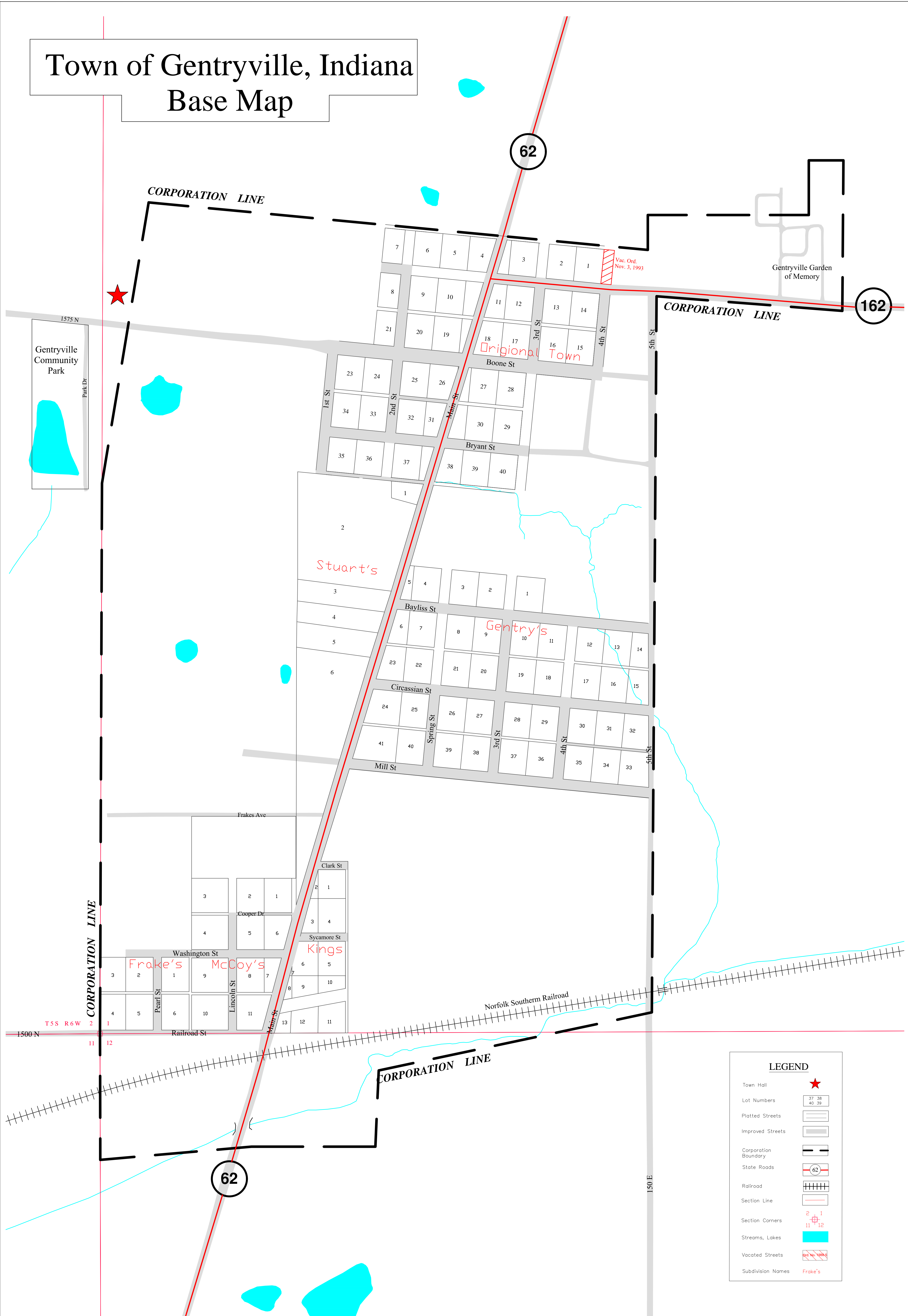
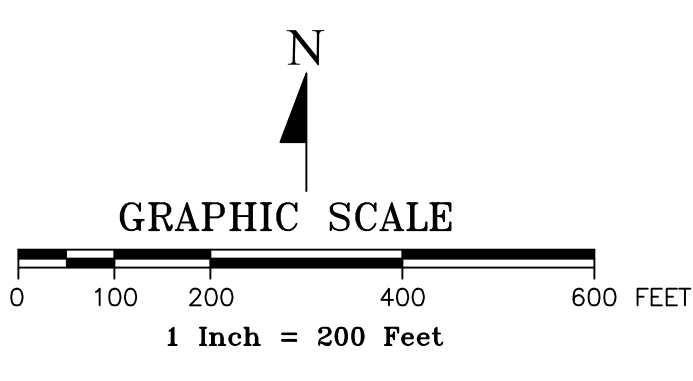


Town of Gentryville, Indiana Base Map



LEGEND	
Town Hall	★
Lot Numbers	37 38 40 39
Platted Streets	▬▬▬
Improved Streets	▬▬▬▬
Corporation Boundary	▬▬▬▬▬▬
State Roads	62
Railroad	
Section Line	▬▬▬▬▬▬
Section Corners	2 1 11 12
Streams, Lakes	■
Vacated Streets	Red No. 1000
Subdivision Names	Frake's



The information located upon the Gentryville Indiana Base Map is provided by Indiana 15 Regional Planning Commission. The data provided herein was compiled using various sources. The sources include:

- Gentryville Plat Maps from the Spencer County Auditor's Office;
- Miscellaneous surveys and deeds recorded in the Spencer County Recorder's office;
- Town of Gentryville Ordinances that annex territory and vacate streets up to and including Ordinance Number 2013-6

Some of these sources had conflicting boundary descriptions and lots that did not fully close. Any person who relies on said information does so solely at their own risk. While the Indiana 15 Regional Planning Commission worked diligently to piece the legal documents, this data is provided as is without warranty.

INDIANA 15 REGIONAL PLANNING COMMISSION 221 East First Street Ferdinand, IN 47532	
PHONE: (812) 367-8455 FAX: (812) 367-8171 Website: www.ind15rpc.org	
Title: TOWN OF GENTRYVILLE, INDIANA- BASE MAP	
Prepared by: E.E.	Reviewed by: L. G.
Date: June 23, 2014	
Revisions:	
N:\Counties\Special\Maps\Base Maps\Spencer County Communities\Gentryville	
© Copyright 2014 Indiana 15 Regional Planning Commission	