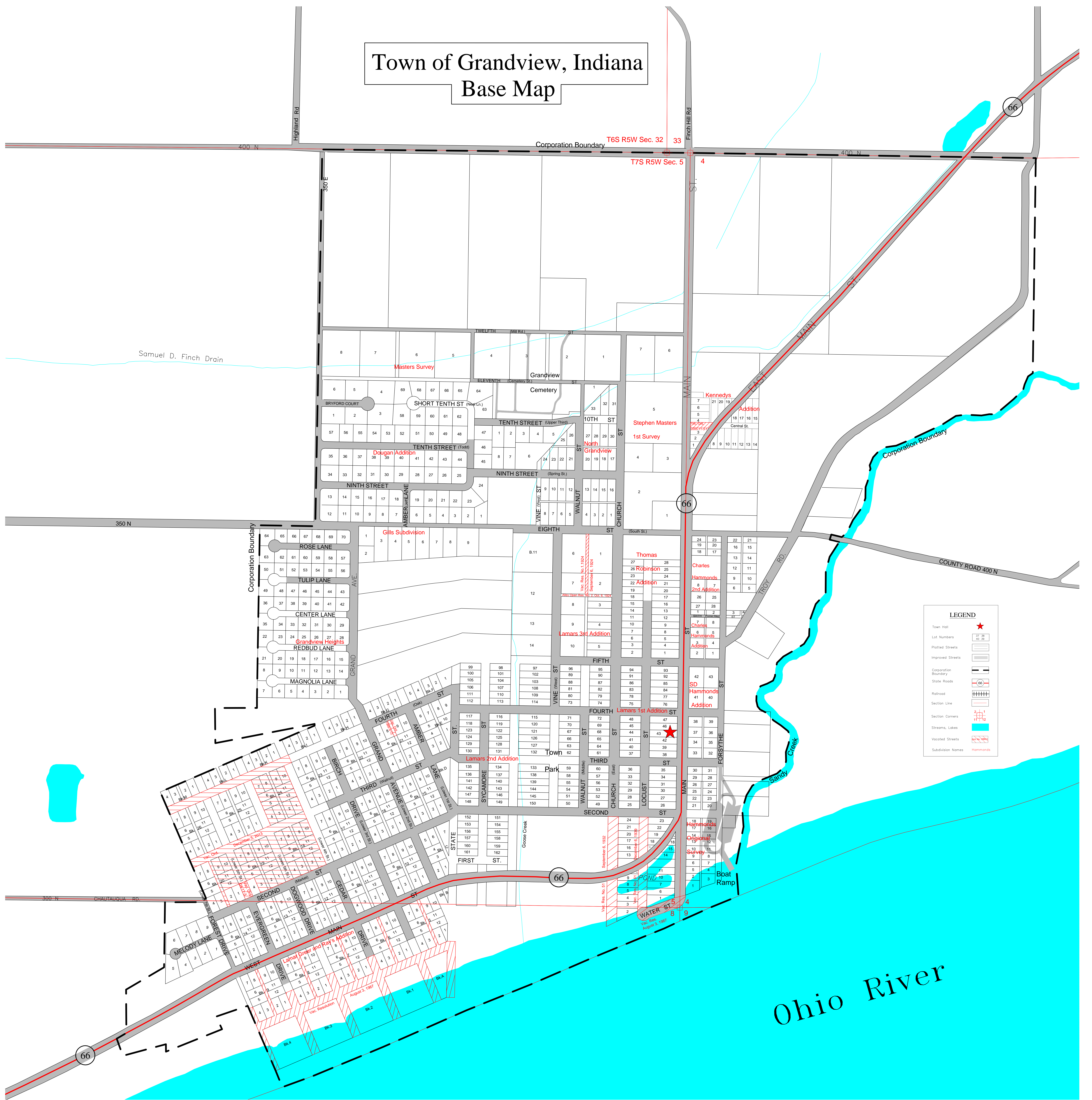


Town of Grandview, Indiana Base Map



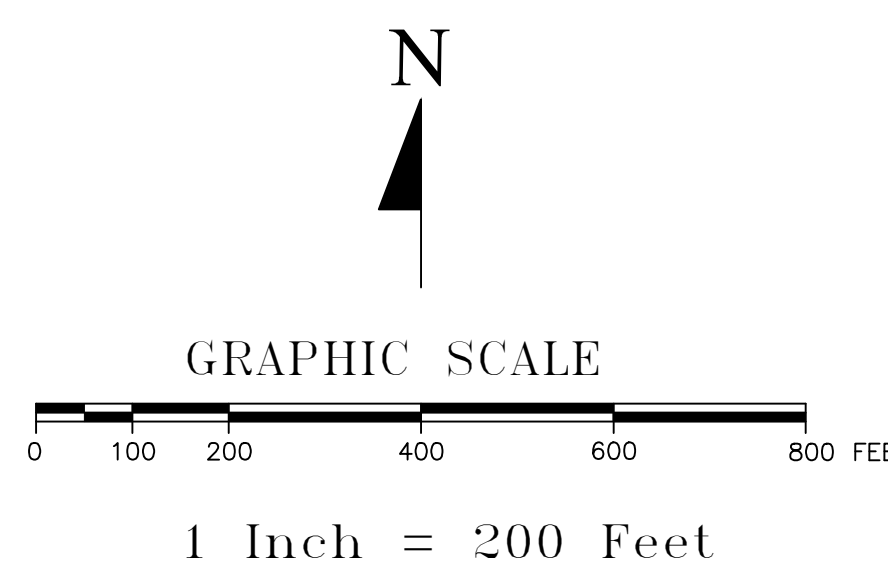
LEGEND

- Town Hall
- Lot Numbers
- Platted Streets
- Improved Streets
- Corporation Boundary
- State Roads
- Railroad
- Section Line
- Section Corners
- Streams, Lakes
- Vacated Streets
- Subdivision Names

The information located upon the Grandview Indiana Base Map is provided by Indiana 15 Regional Planning Commission. The data provided herein was compiled using various sources. The sources include:

- Grandview Plat Maps from the Spencer County Auditor's Office;
- Miscellaneous surveys and deeds recorded in the Spencer County Recorder's office;
- Town of Grandview Ordinances that annex territory and vacate streets up to and including Ordinance Number 2013-12-5-1

Some of these sources had conflicting boundary descriptions and lots that did not fully close. Any person who relies on said information does so solely at their own risk. While the Indiana 15 Regional Planning Commission worked diligently to piece the legal documents, this data is provided as is without warranty.



INDIANA 15 REGIONAL PLANNING COMMISSION
 224 East First Street
 Ferdinand, IN 47332
 PHONE: (812) 367-8455
 FAX: (812) 367-8171
 Website: www.ind15pc.org

Title: Town of Grandview, Indiana - Base Map
 Prepared by: E.E. Reviewed by: L.G. Date: June 23, 2014
 Revisions:
 Revisions:
 N:\Counties\Spencer\Maps\Base Maps\Communities\Grandview\Grandview Base Final.dwg
 © Copyright 2014 Indiana 15 Regional Planning Commission