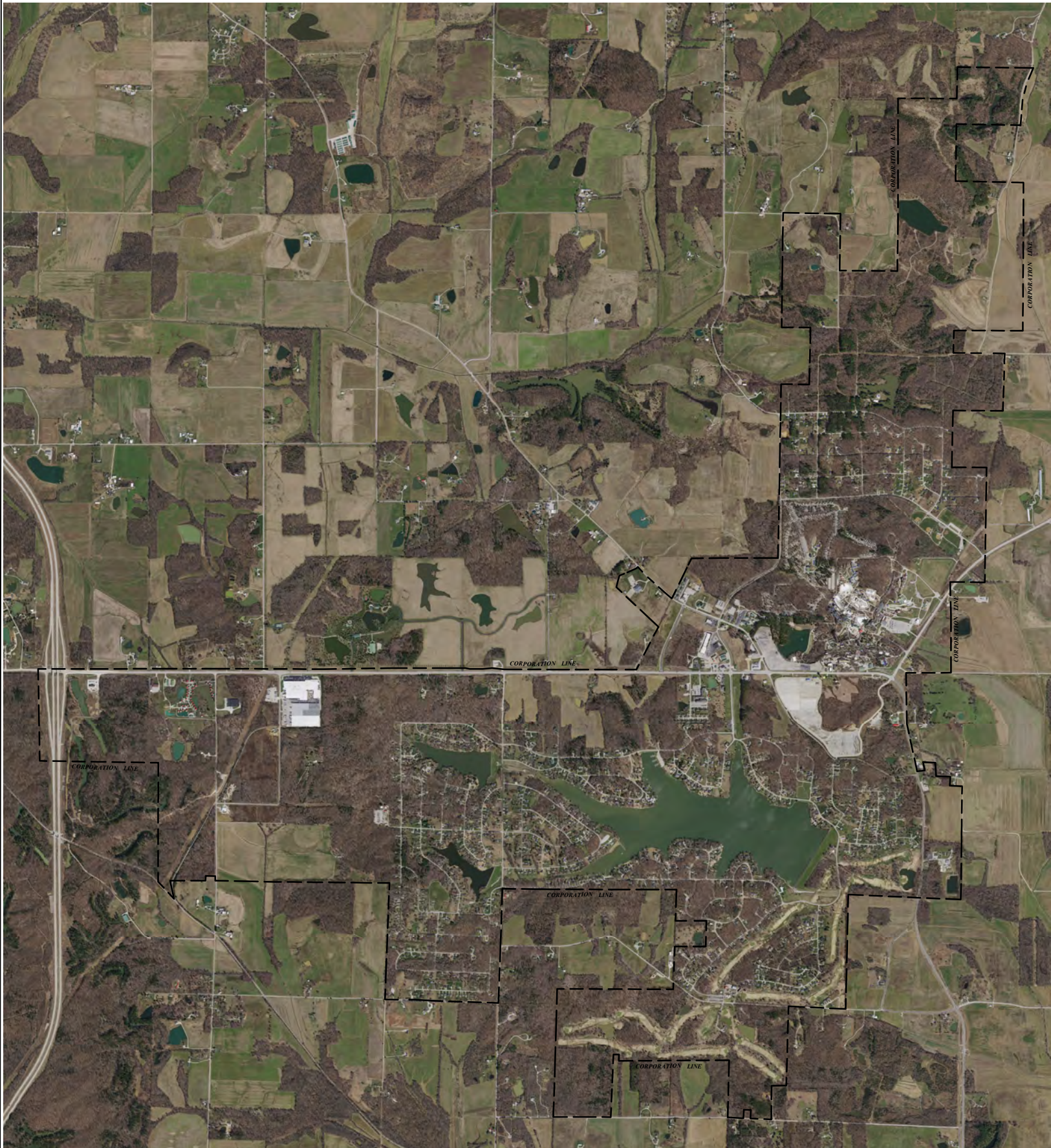


Town of Santa Claus, Indiana Aerial Map

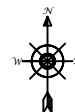
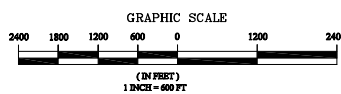



The information located upon the Santa Claus, Indiana Base Map is provided by Indiana 15 Regional Planning Commission.

The data provided herein was compiled using various sources. The sources include:

- Santa Claus Plat Maps from the Spencer County Auditor's Office;
- Miscellaneous surveys and deeds recorded in the Spencer County Recorder's office;
- Santa Claus Town Ordinances that annex territory and vacate streets up to and including 2005-08.

Some of these sources had conflicting boundary descriptions and lots that did not fully close. Any person who relies on said information does so solely at their own risk. While the Indiana 15 Regional Planning Commission worked diligently to piece the legal documents, this data is provided as is without warranty.



 INDIANA 15 REGIONAL PLANNING COMMISSION 211 East Park Street Evansville, IN 47712 Phone: (812) 462-6177 Website: www.i15.org	
Title: TOWN OF SANTA CLAUS, INDIANA	
Prepared by: J. N. & T. M.	Revised by: L. G.
Date: APR. 2007	
INDIANA 15 REGIONAL PLANNING COMMISSION SPENCER COUNTY SPENCER MAPS BASE MAPS CORRECTIONS	
© Copyright 2007 Indiana 15 Regional Planning Commission	