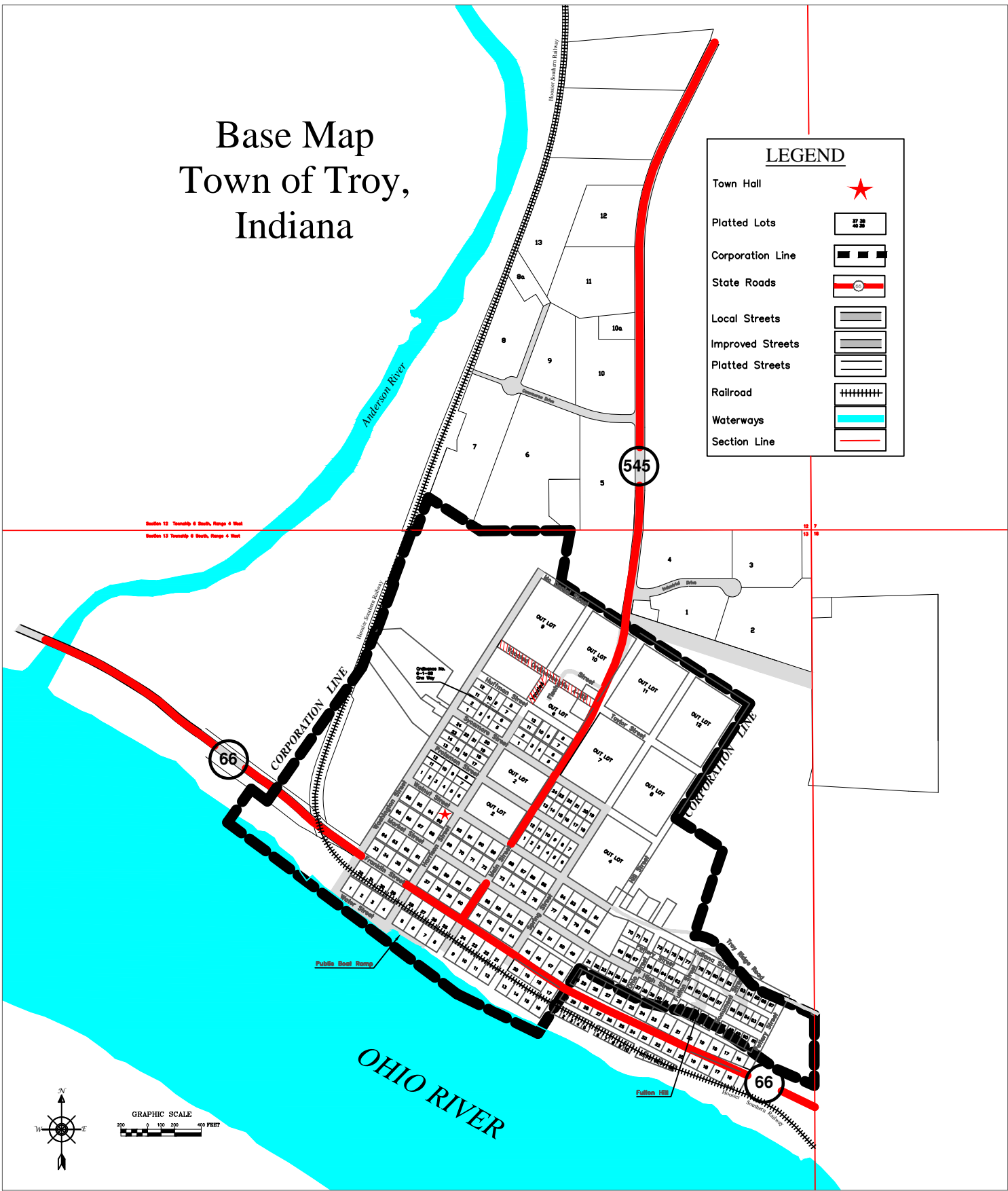



Base Map Town of Troy, Indiana



The information located upon the Troy, Indiana Base Map is provided by Indiana 15 Regional Planning Commission. The data provided herein was compiled using various sources. The sources include:

- Town of Troy Map, 4-22-1994, Donan Engineering;
- Town of Troy Map, 9-12-1966, recorded 6-22-1967, Ohio Valley Engineers;
- Troy Plat Maps from the Perry County Auditor's Office, John Kistler & Assoc., Inc. Grand Haven Michigan;
- Miscellaneous surveys and deeds recorded in the Perry County Recorder's office;
- Troy Town Ordinances that annex territory and vacate streets up to and including 2000-4.

Some of these sources had conflicting boundary descriptions and lots that did not fully close. Any person who relies on said information does so solely at their own risk. While the Indiana 15 Regional Planning Commission worked diligently to piece the legal documents, this data is provided as is without warranty.

| | | | |
|---|--------------------|-----------------|---|
|  INDIANA 15 REGIONAL PLANNING COMMISSION <small>221 East First Street Ferdinand, IN 47532</small> | | | <small>PHONE: (812) 345-2455 FAX: (812) 345-2471 Website: www.in15p.org</small> |
| Title: Town of Troy, Indiana | | | |
| Prepared by: B. H.; T.E.M. | Reviewed by: L. G. | Orig: Sep. 2006 | |
| Revisions: | | | |
| Revisions: | | | |
| © Copyright 2006 Indiana 15 Regional Planning Commission | | | |