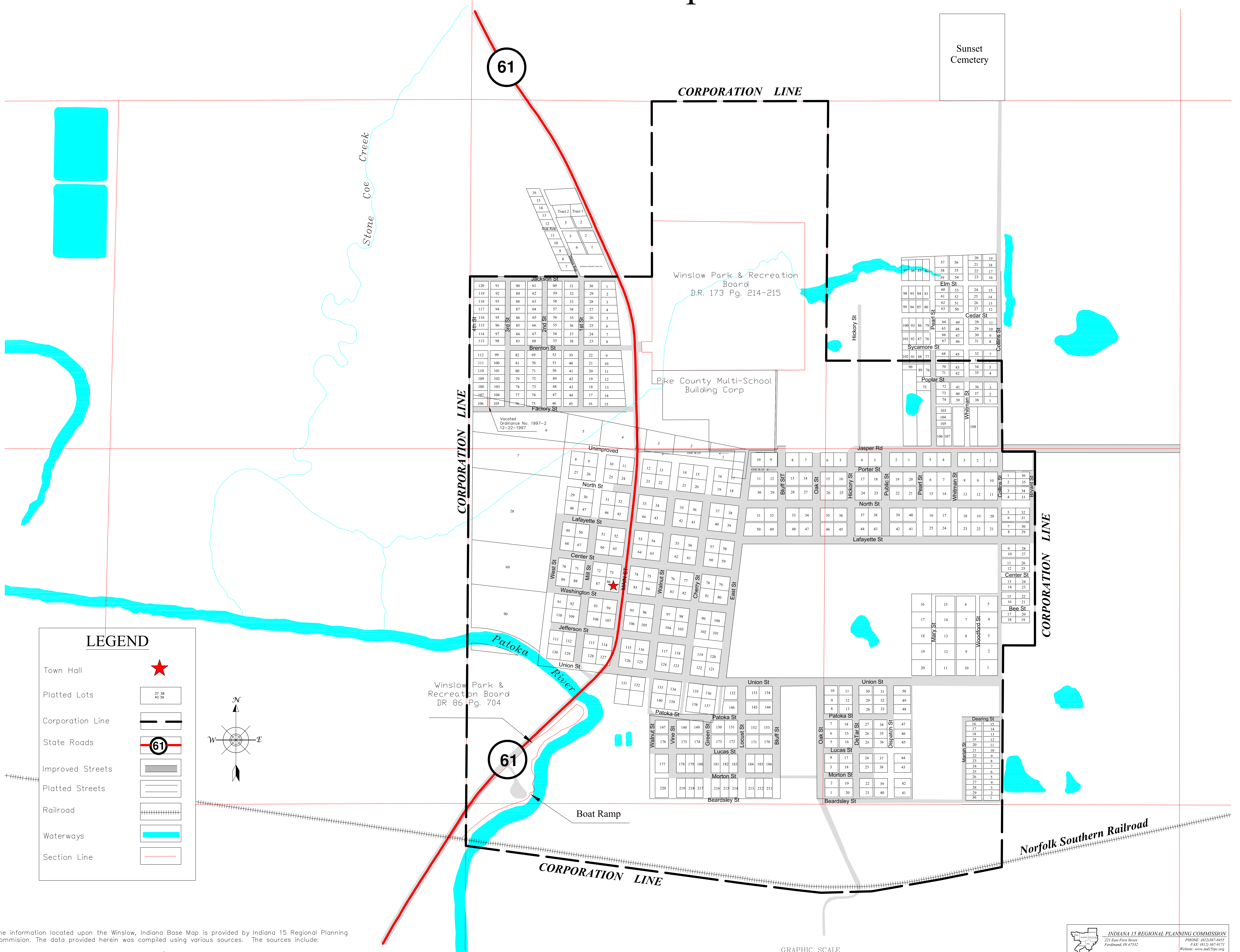
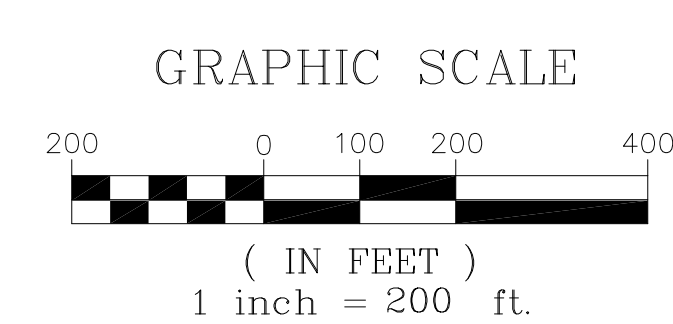
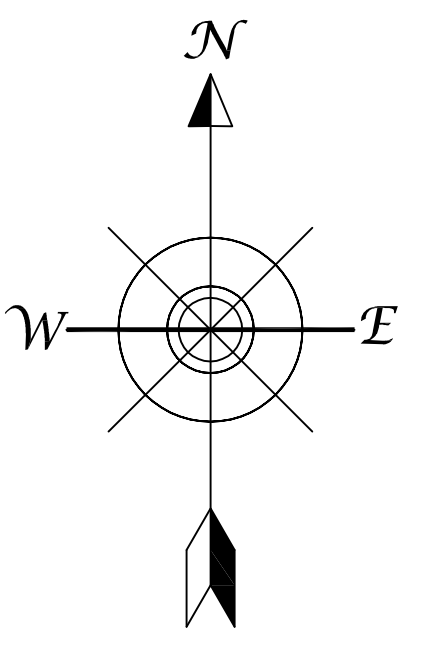


# Town of Winslow, Indiana Base Map



### LEGEND

- Town Hall
- Platted Lots
- Corporation Line
- State Roads
- Improved Streets
- Platted Streets
- Railroad
- Waterways
- Section Line



The information located upon the Winslow, Indiana Base Map is provided by Indiana 15 Regional Planning Commission. The data provided herein was compiled using various sources. The sources include:

- Winslow Plat Maps from the Pike County Auditor's Office;
- Miscellaneous surveys and deeds recorded in the Pike County Recorder's office;
- Winslow Town Ordinances that annex territory and vacate streets up to and including 2000-4;

Some of these sources had conflicting boundary descriptions and lots that did not fully close. Any person who relies on said information does so solely at their own risk. While the Indiana 15 Regional Planning Commission worked diligently to piece the legal documents, this data is provided as is without warranty.

INDIANA 15 REGIONAL PLANNING COMMISSION  
 221 East First Street  
 Ferdinand, IN 47532

PHONE: (812)387-8455  
 FAX: (812)367-8171  
 Website: www.ind15pc.org

Title: TOWN OF WINSLOW, INDIANA  
 Prepared by: T.E.M.    Reviewed by: L. G.    Orig: MAR, 2007  
 Revisions:

N:\Counties\Pike\Maps\Base Maps\Comm\Winslow  
 © Copyright 2007 Indiana 15 Regional Planning Commission